



Finding

WIN-WIN

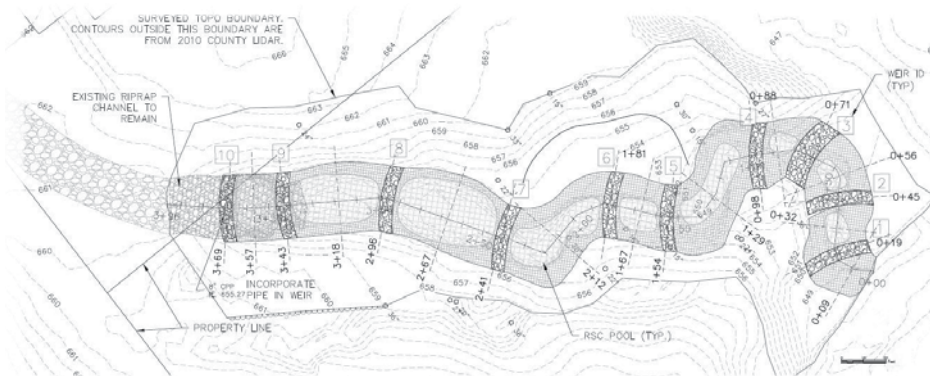
2016-2017 ANNUAL REPORT



a western trillium in Petrifying Springs Park in Kenosha

People Projects Progress

Much like this western trillium forb found blooming in Petrifying Springs Park, Root-Pike WIN saw this past year unfurl with a number of successes large and small. From a ravine restoration design on the School Tributary of the Pike River to the beginnings of a 40-acre wetland restoration in Racine County's Cliffside Park to an approved Wind Point Plan, our strategy of creating and implementing Nine Key Element Watershed Restoration Plans is taking root.



project #42G: the design for the restoration of a ravine in Somers

This fiscal year, we helped initiate and/or secure 1.4 million dollars in project grants for design and construction work in the Root River, Pike River and Wind Point watersheds. From the eroded banks of the Pike River within Petrifying Springs to the restored Lake Vista Park along the shoreline in Oak Creek, the Plans' recommendations have turned to shovel ready work. Seeing these and many other projects sprout has been the most gratifying experience of my life.

It is also worth mentioning that we reconfigured our Respect Our Waters campaign and the Southeastern Wisconsin Clean Water Network to satisfy more of the Plans' recommendations. A runoff pollution education event was held in every one of the 22 municipalities we serve. A targeted runoff campaign reached over 10,000 people in 10 different pollutant hotspots in all five watersheds. A larger than life mascot named "Sparkles" engaged and interacted with kids from Dog Day at Drexel

Square in the City of Oak Creek to the Fourth of July Parade in the Village of Somers – and many events in between.

Still, we are humbled by the work that is still in front of us. Every two years, Section 303(d) of the Clean Water Act requires states to publish a list of all waters that do not meet water quality standards.

Unfortunately, all five of the watersheds in the Root-Pike basin are on this list. There are 500 project recommendations in the three completed Plans designed to get our watersheds off this infamous list.

And if that wasn't enough, Foxconn is coming, the Horlick Dam is waiting, and the Waukesha Diversion is happening. Uniquely, we accept these challenges.



project #PR12: Board members and network volunteers removing buckthorn from the natural areas of UW-Parkside

Beyond the projects in progress and residents reached, we are proud to have "initiative" and "network" back in our ethos. This year, we sought partnerships, renewed relationships and worked towards win-win solutions. A partnership with UW-Parkside and Kenosha Public Museum brought awareness to the often forgotten and neglected Pike Creek watershed. A change to our bylaws and articles of incorporation at our annual meeting paved the way for a more meaningful relationship with our Resource Group. An emphasis on bringing municipalities together moved more than 20 projects from not-started to in-progress. I am grateful for the cooperation we have received in the past year. It's clear – people working with people, not against them, make these plans happen.

I am happy to report that Root-Pike WIN is no longer surviving. We are thriving. Together, we can leave a legacy that restores, protects and sustains the Root-Pike basin as a place where people want to be. Help us continue to find the win-wins.

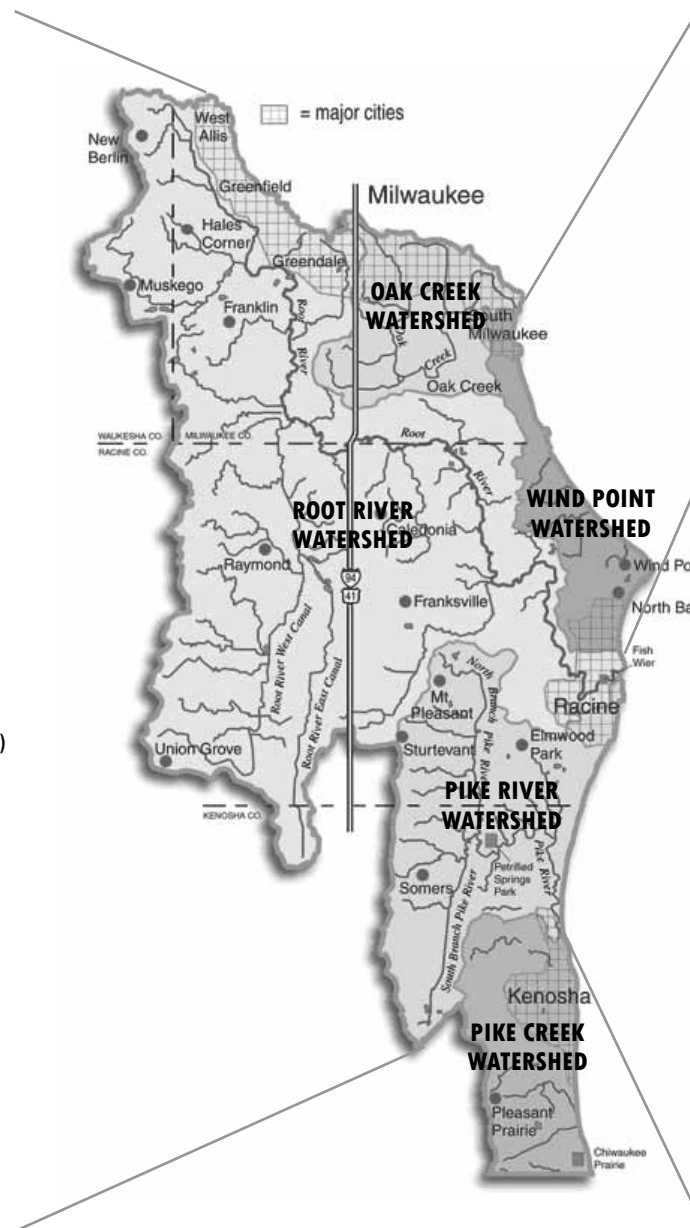
Dave Giordano
Executive Director

cover: a highly-eroded ravine enters Lake Michigan from Cliffside Park in Caledonia

Projects in Progress or Complete

Below are projects in planning, design, implementation, or which are complete or partially complete. Projects are advanced by municipalities, landowners, and/or Root-Pike WIN.

- #MPC-02: **Streambank Restoration Complete (Medium)**
Reduce erosion in Grobschmidt Park in Franklin
- #MPC-05: **Recreational Use and Access Complete (Medium)**
Install educational signage in Grobschmidt Park in Franklin
- #MRR-05B: **Riparian Restoration in Planning (Medium)**
Improve buffer width and quality in Franklin
- #URR-17: **Streambank Restoration in Implementation (Medium)**
Bank erosion issues in Kulwicki Park in Greenfield
- #AER-7, 8: **Streambank Restoration in Planning (Critical)**
Reduce bank erosion near CNH offices in Racine
- #NP01: **Streambank and Wetland Restoration in Design (High)**
Reduce erosion & sediment in Colonial Park in Racine
- #RHD-21: **Riparian Restoration Partially Complete (Medium)**
Monitor outfall near Island Park Bridge in Racine
- #RWO-1, 8: **Invasive Species Partially Complete (Critical and Medium)**
Invasive Species removal in the City of Racine
- #NP-02: **Dam Removal in Planning (Critical)**
Explore removal or modifications to Hortick Dam in Racine
- #RCL-05: **Riparian Restoration Partially Complete (Medium)**
Improve agricultural practices on private land in Raymond
- #RCL-10, 12: **Riparian Restoration Partially Complete (Critical)**
Improve agricultural practices on private land in Raymond
- #RHD-16, 18: **Riparian Restoration Partially Complete (Low)**
Improve agricultural practices on private land in Raymond
- #RPC-RE56: **Streambank Restoration Partially Complete (Low)**
Streambank erosion on private land in Raymond
- #RPC-RE57, 58, 59: **Streambank Restoration Partially Complete (Low)**
Address streambank erosion in Raymond
- #RPC-RE60, 61, 62: **Streambank Restoration Partially Complete (Medium)**
Address bank erosion on private land in Raymond
- #RRC-03: **Wetland Restoration Complete (Low)**
Degraded wetland on private land in Raymond
- #RCL-02, 04, 06: **Riparian Restoration Partially Complete (Medium)**
Improve agricultural practices on private land in Yorkville
- #RRC-01, 02: **Streambank Restoration Complete (Low and Medium)**
Streambank erosion on private land in Yorkville
- #RCL-07, 09, 20: **Riparian Restoration Partially Complete (Medium)**
Improve agricultural practices on private land in Caledonia
- #RPC-HD-1: **Dam Removal in Planning (Low)**
Create fish passage through private land in Caledonia
- #RPC-RE43, 44: **Streambank Restoration Partially Complete (Medium)**
Bank stabilization to address bank erosion in Caledonia
- #RPC-RE45, 46, 47, 48: **Bank Restoration Partially Complete (Critical)**
Address bank erosion near CTH V in Caledonia
- #RCL-03: **Riparian Restoration Partially Complete (Medium)**
Improve agricultural practices on private land in Mt. Pleasant
- #RCL-08: **Riparian Restoration in Implementation (Critical)**
Reduce erosion along streambank in Union Grove



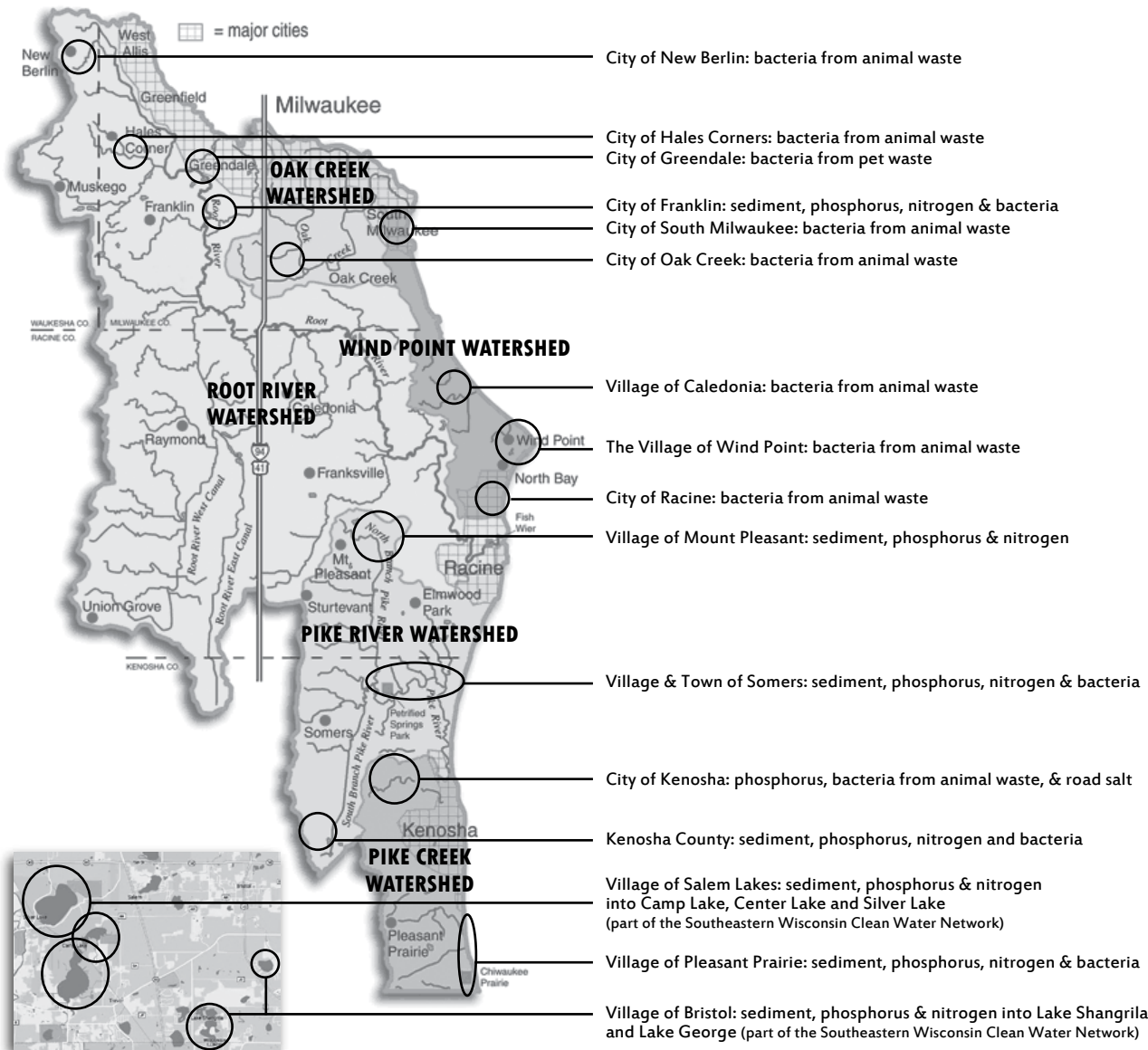
- #1: **Other Management Measures in Planning (Medium)**
Debris cleanup in South Milwaukee
- #GI1: **Priority Green Infrastructure in Planning (Critical)**
Native recreational area in South Milwaukee
- #GI3: **Priority Green Infrastructure Partially Complete (Critical)**
Naturalize areas of Lake Vista Park in Oak Creek
- #22: **Wetland Restoration in Planning (Critical)**
Recreate pre-settlement conditions in Cliffside Park
- #TRF 4: **Streambank Restoration in Planning (Critical)**
Eroding ravine in Cliffside Park in Caledonia
- TRF 2/3: **Riparian Restoration in Planning (Low)**
Buffer improvements along Turtle Creek in Caledonia
- #21: **Wetland Restoration in Planning (Critical)**
Flood storage / improve habitats along Turtle Creek in Caledonia
- #43A: **Detention Basin Retrofit Partially Complete (Critical)**
Manage invasive species in naturalized area in Racine
- 23A: **Detention Basin Retrofit in Planning (High)**
Naturalize area and redesign pond in Pritchard Park in Racine
- 42G: **Ravine Restoration in Design (Critical)**
Regenerative stormwater conveyance on private land in Somers
- 42H: **Ravine Restoration in Planning (Critical)**
Wetland restoration in Hawthorn Hollow in Somers
- 42I: **Oak Savanna Restoration in Design (High)**
Replanting native plants and trees on private land in Somers
- AG13: **Ag Land Management Partially Complete (Critical)**
Increased riparian buffer on private land in Somers
- AG18: **Ag Land Management Partially Complete (Critical)**
Increased buffer on private land along School Trib. in Somers
- GI13: **Priority Green Infrastructure in Implementation (High)**
Prairie and wetland restoration in Neumiller Woods in Somers
- GI14: **Priority Green Infrastructure in Design (High)**
Prairie and wetland restoration in Gitzlaff Park in Somers
- PR09: **Streambank Restoration Partially Complete (Critical)**
Flood storage & habitats along North Branch in Mount Pleasant
- PC04: **Streambank Restoration in Planning (Critical)**
Riparian and bank improvements along South Branch in Somers
- PCST: **Riparian Restoration Partially Complete (Critical)**
Increased native buffer along School Tributary in Somers
- PCTQ: **Riparian Restoration in Planning (High)**
Possible wetland restoration along South Branch in Somers
- PR09 & W15: **Streambank & Wetland Restoration Complete (Critical)**
Bank and habitat creation along North Branch in Mount Pleasant
- PR11: **Streambank Restoration in Design (Critical)**
Bank and riparian buffers within Petrifying Springs Park in Somers
- PRLD: **Riparian Restoration Partially Complete (Critical)**
Buffer strips along Lamparek Ditch in Mount Pleasant

Targeted Runoff Pollution Campaigns

Every two years, Section 303(d) of the Clean Water Act requires states to publish a list of all waters that do not meet water quality standards. Unfortunately, all five of the watersheds in the Root-Pike basin are on this list. We accept the challenge by bringing awareness and action to the issues.

This year, as part of the Respect Our Waters grant from the DNR, we began targeting areas of the watersheds that have been identified as runoff pollutant hotspots. Hotspots were selected based on information in our Nine Key Element Watershed Restoration Plans and/or from our municipal partners. Mailers that explained the issues and solutions were then mailed directly to households within each hotspot.

In the next year, we will be doing water quality testing in a few of these areas. Our goal is to see if we have made a measurable effect on the water quality through a more targeted approach. This new program also helps us achieve a key Education and Public Outreach recommendation of our Nine Key Element Watershed Restoration Plans.



Students from UW-Parkside's GeoClub help pull buckthorn in the campus natural area as part of "Make a Difference Day".



We got inspiration on New Year's Eve Day when this bald eagle flew over the South Branch of the Pike River... Awesome!



Cliffside Park got special attention this year as Thompson & Assoc. and Tallgrass helped us secure a large wetland grant.



At EcoFest, Our Program Manager, Allison Thielen, shows how runoff pollution makes its way from homes to our rivers and lakes.



Field trip! Bullen Middle School students learned about salmon, salt and system connectivity at the mouth of the Pike River.



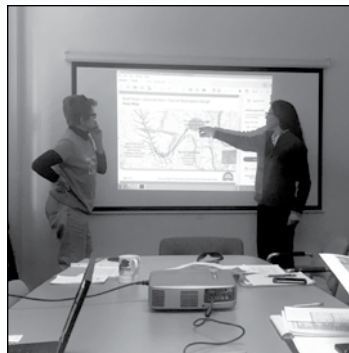
HIGHLIGHTS



There's lots of ag runoff at "Foxconn Corners." We're exploring how the new development will help/hurt the Pike River.



The Murphy family pitches in at Pritchard Park pulling buckthorn. Root-Pike WIN is helping Racine County restore the Park.



WeedOut! Racine and Inter-fluve plan the wetland restoration and invasive species removal in Colonial Park.



SEWRPC leads the Oak Creek Watershed Restoration Planning at a stakeholder meeting held this year... More in 2018!



July floods brought closed roads and more Pike River bank erosion. We brought the U.S. Army Corps of Engineers in August.

The watershed restoration plans we have set out to implement will take 25+ years to complete. Our vision is to see this happen and we are positioning ourselves for the long-term. In the fiscal year 2016-2017, Root-Pike WIN made significant leaps to build back our operational reserves and increase funding for restoration projects. Our net income increased by 8.5%, operational donations increased by 48%, designated donations increased by 100%, and our foundation grants increased by 142%. Our strategy of funding diversification has begun to take shape through our ability to gain more operational fees associated with project grants. We are grateful to those who have helped us to thrive in the last year and continue to support us as we seek long-term viability.

Financial Position

As of June 30, 2017

ASSETS

Current Assets	
Checking/Savings	\$113,059
Accounts Receivable	\$22,468
Other Current Assets	\$4,745

Total Current Assets \$140,272

Total Fixed Assets \$926

TOTAL ASSETS \$141,198

LIABILITIES & EQUITY

Current Liabilities	
Accounts Payable	\$17,729
Credit Cards	\$100
Fiscal Sponsorships	\$12,550

Total Current Liabilities \$30,379

Equity	
Unrestricted	\$69,176
Net Income	\$41,644

Total Equity \$110,820

TOTAL LIABILITIES & EQUITY \$141,198

Profit & Loss

As of June 30, 2017

INCOME

Donations - Operational	\$ 15,931
Donations - Designated	\$ 2,604
Stripe (website) Donations	\$ 205
Corporate/business grants	\$ 2,000
Foundation/trust grants	\$ 104,635
Local government grants	\$ 82,234
Nonprofit organization grants	\$ 17,000

Total Income \$ 224,609

EXPENSES

Southeastern Wisconsin Clean Water Network & Respect Our Waters Watershed Plan Implementation	\$31,212
Subcontractor Project Expenses	\$ 1,925
Salaries & staffing expenses	\$ 105,160
Program & Operational expenses	\$ 10,691
Occupancy expenses	\$ 5,899
Administrative expenses	\$ 3,561
Depreciation/Amortization	\$1,087

Total Expenses \$182,965

NET INCOME \$41,644



In the last year, Root-Pike WIN made huge leaps forward with clean water projects and financial viability.

Donors and Funders

Root-Pike WIN would like to recognize all of those who have helped advance our mission, fund projects and move our operations forward. Thank you for your contributions over the last year!

Jamie Axelsen
Rebecca Belmont
Joan Bennett
Kelli Britson
Nancy Carlson
Teresa Coronado
Karl David & Elaine Radwanski
Raymond DeHahn
Travis & Mabel DuPriest
David & Ellen Easley
Robert & Patricia Eaton
Gary & Dana Fahl
Morris Firebaugh
Tim & Lois Fulton
Camille Gendusa Bluestein
Mark Giese
Gerald & Susan Greenfield
Sandra Halmo
Gerald & Susan Harsh
Charles & Ann Heide

Nancy Hennessy
Jerold & Joyce Hershberger
Patricia Holy
Richard Kinch & Linda Stengel
Julie Kinzelman
George & Elizabeth Kruck
Kenneth Kutnyak
Diane Lange
Janet Lawrence
Diane Lembck
Michael & Ann Luba
Jeffrey Lueck
Dennis & Peggy Makovsky
Ralph & Shirley Mandernack
Cory & Roseann Mason
Barbara Meyocks
Margaret Miller
William Moore
Ken Moore & Sandra Ambrosini
James & Christine Mueller

Peter Oster
Luke Pacholski
Courtenay Teska
Imogene Powers Johnson
Tom & Bonnie Prochaska
Mr. & Mrs. William Pugh
Gary Raasch
Rafi & June Rafiullah
Julie Rather
David Rhoads & Sandra Roberts
Adam Romanak
Richard & Susan Rosenberg
Bill & Linda Sasse
Eric & Jane Schumann
Lisa Scott Ptacek
John & Susan Scripp
Irene Sekulic
Letitia Short
Gregg & Julieann Sinnen
James & Michelle Small

Allan & Elizabeth Sommer
Howard Stacey
Mike & Catherine Staeck
Lawrence Sura
Joann Sustachek
Steven Szymanski
Allison Thielen
Patricia & Barry Thomas
Richard & Lynn Ting
Jeanne Tyree-Francis
Barb & Joe Vass
James & Cherry Wardrip
Melissa & Jay Warner
Luan Wells
Allison & Dan Werner
Tedi Winnett & Russ Skewes
Joy Wolf
Thomas & Rae Wood
Pamela & Neil Zimmerman
Marybeth Zuhlke

Borzynski Farms, Inc.
City of Racine
City of West Allis
CNH Industrial America LLC
Department of Natural Resources
E.C. Styberg Foundation
Finishing & Plating Service
Freshwater Future
Fund for Lake Michigan
Great Lakes Commission
Huck Realty LLC
LUMW Foundation
Marek Landscaping, LLC
Nielsen Madsen & Barber, SC
The Palmer Foundation
Racine Community Foundation
Racine County
Runzheimer Foundation
SC Johnson
Seno K/RLT Conservancy Inc.
Southeastern Wisconsin Clean Water Network
Tallgrass Land Conservation, LLC

Board and Staff

Michael Luba - President
Root-Pike Basin Supervisor (ret.)
Department of Natural Resources

Joshua Sopczak - Vice President
Assistant Vice President
Tri City National Bank of Racine

Jim Small - Treasurer
CPA & Partner
Maller Peterson, LLC

Dan Meyer - Secretary
Project Manager
Retail Fixtures

Bill Sasse - Former President
Director of Engineering (ret.)
Village of Mount Pleasant

John Scripp
Attorney
Private Practice

Bob Eaton
Owner
Bob Eaton Company

Kathleen Field
Horticulture Instructor
Gateway Technical College

Pete Rohlman
Co-Owner
Millennium Forms

Allison Thielen
Program Manager
allison@rootpikewin.org
262-898-2055

Dave Giordano
Executive Director
dave@rootpikewin.org
262-496-2199

262-898-2055

Office Location:
800 Center Street, Suite 118
Racine, WI 53403

Mailing Address:
PO Box 044164
Racine, WI 53404

www.rootpikewin.org

